

Relação do aço

V5

V6

V11

V12

V13

V14

V1-1

V2-1

V3-1

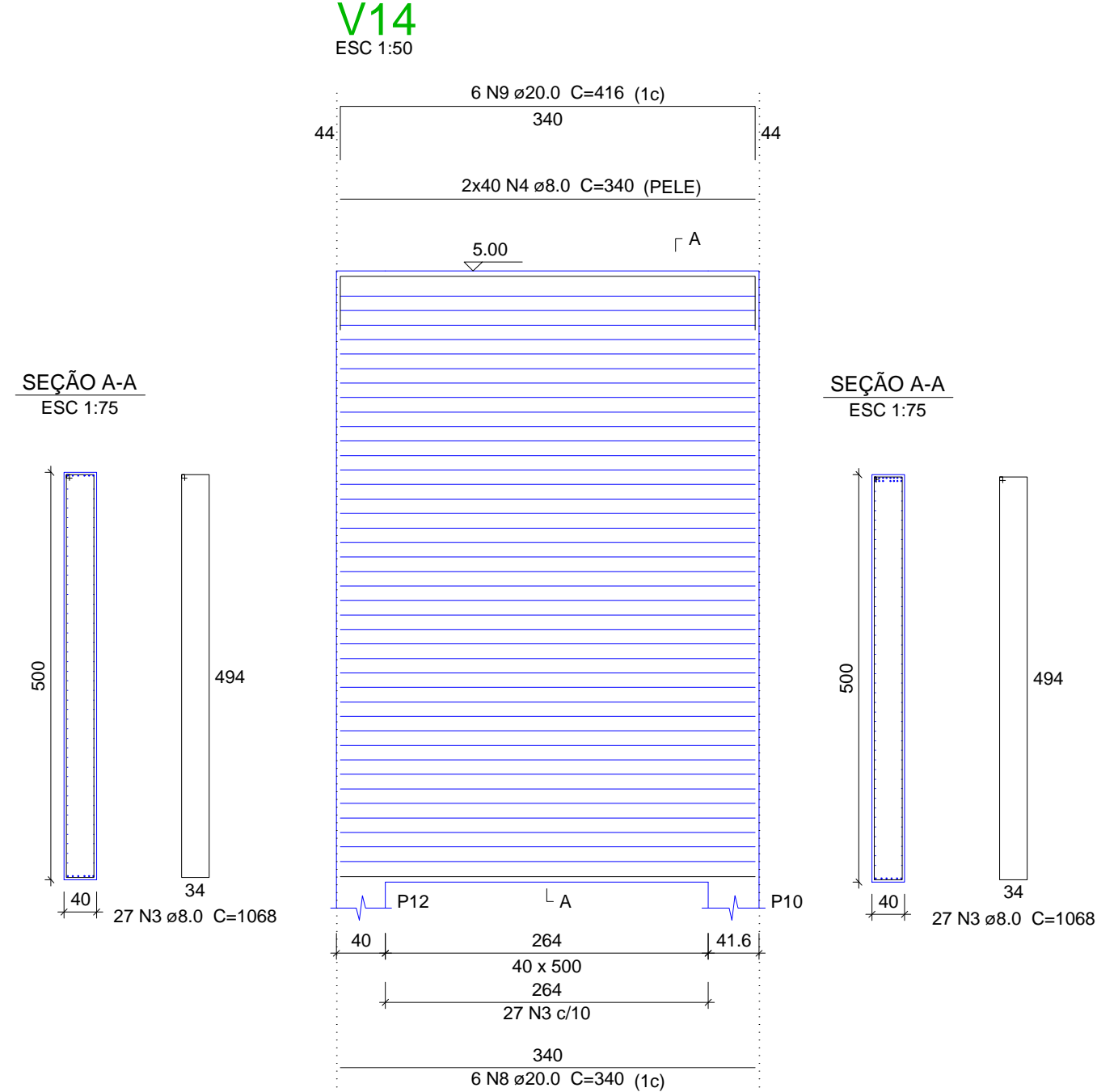
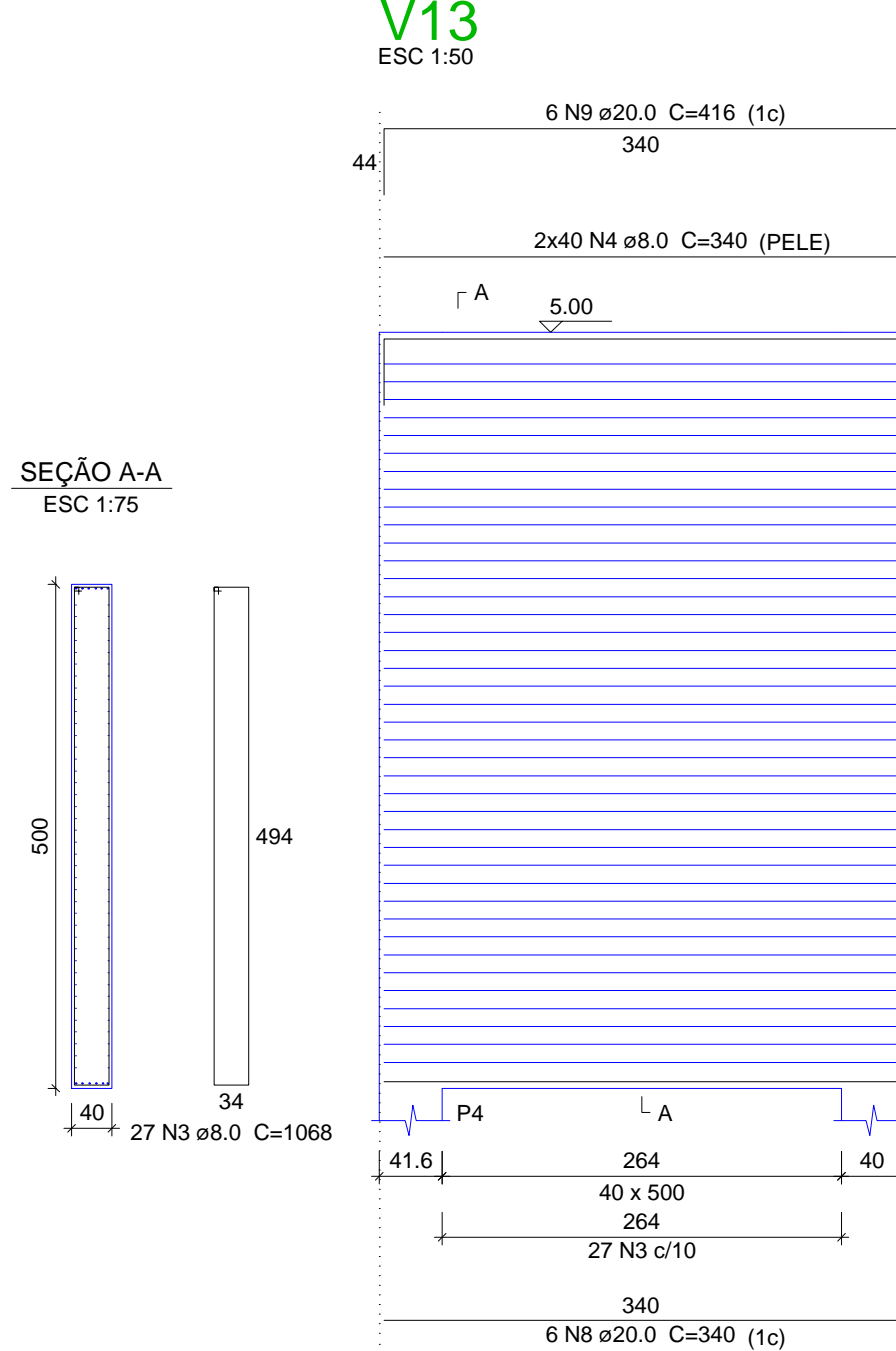
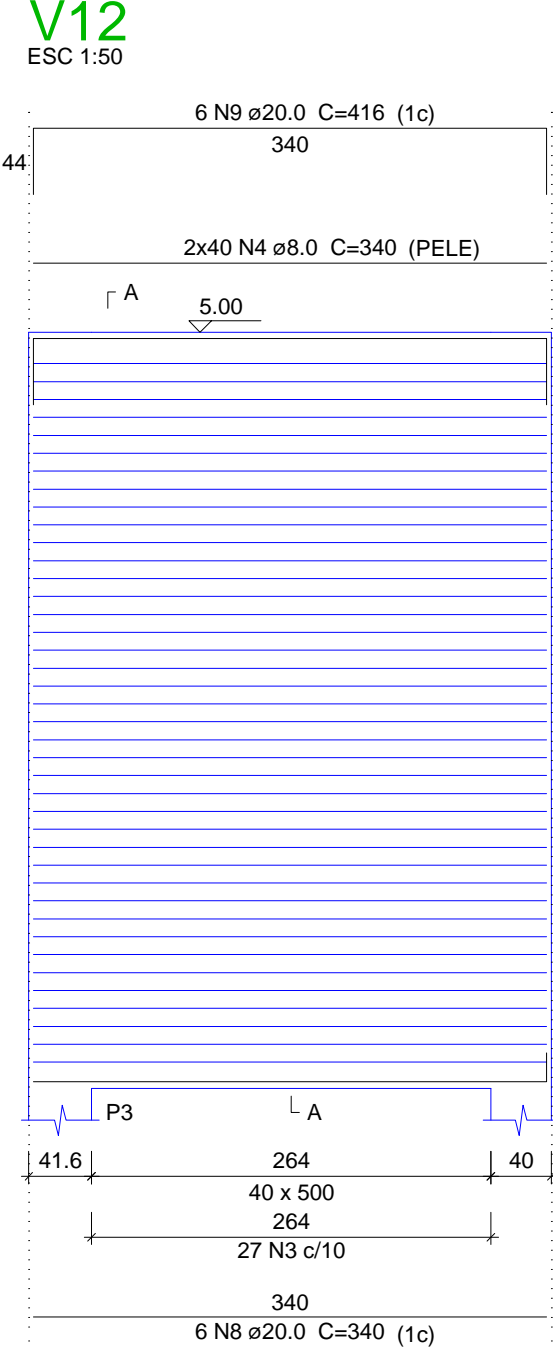
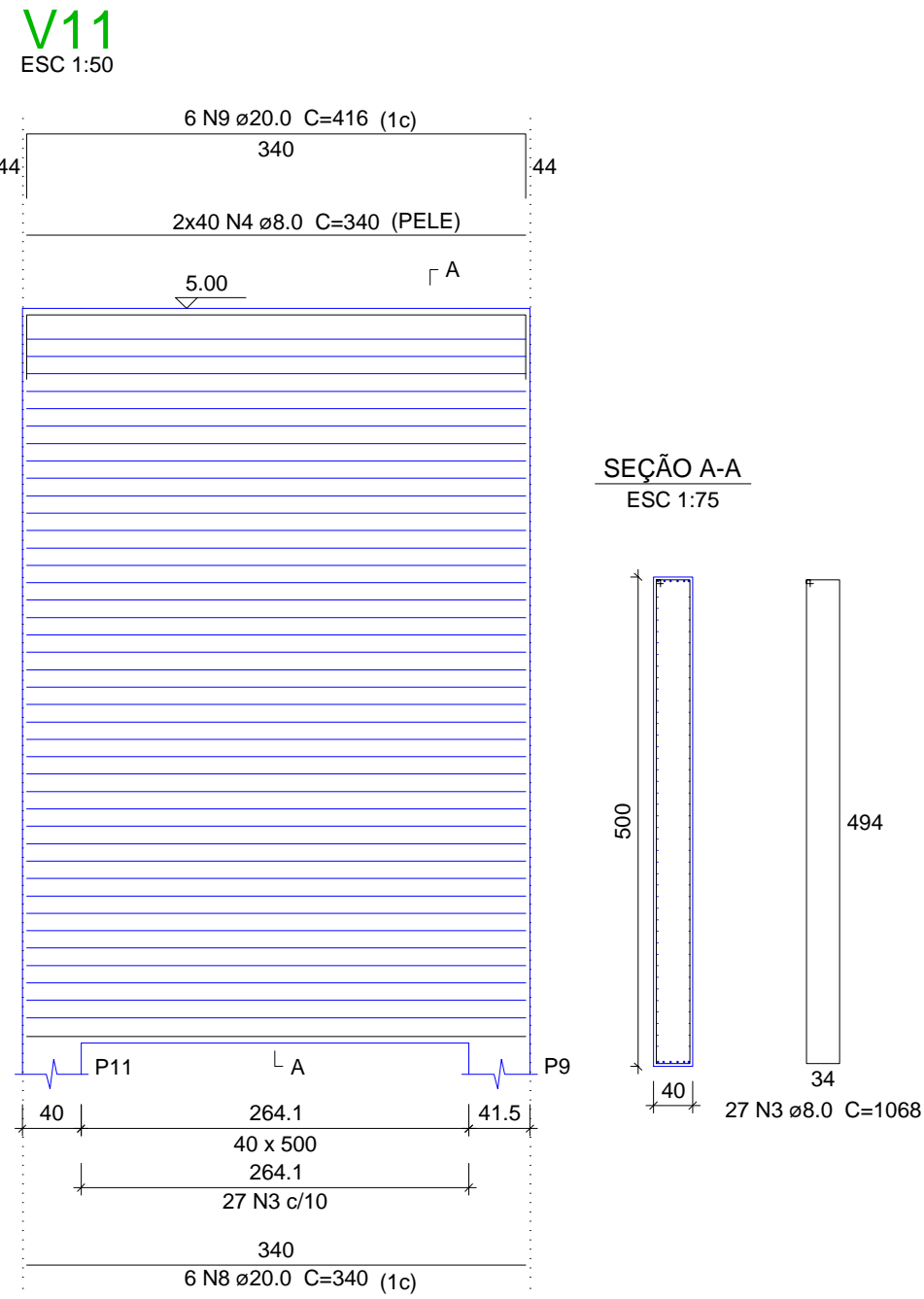
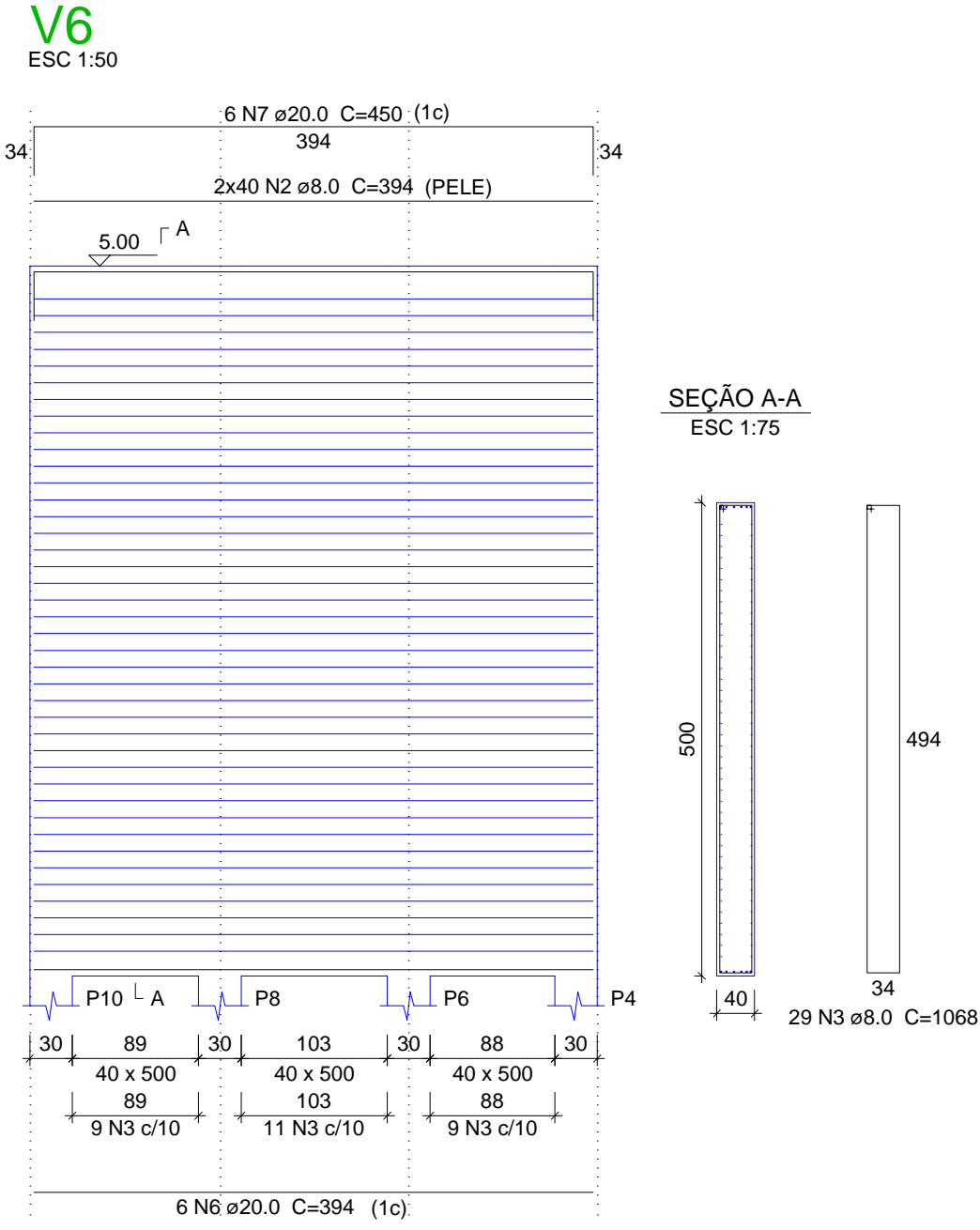
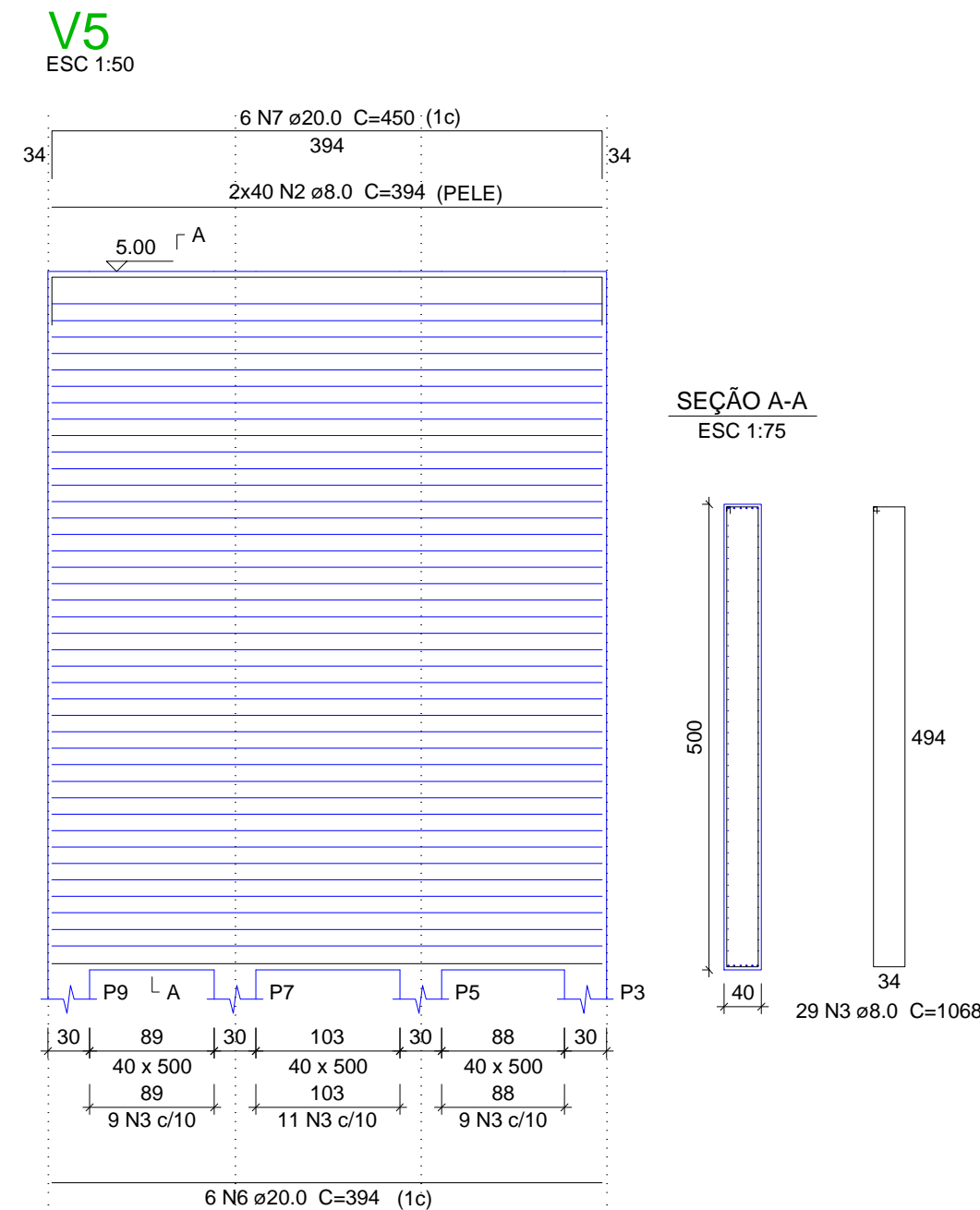
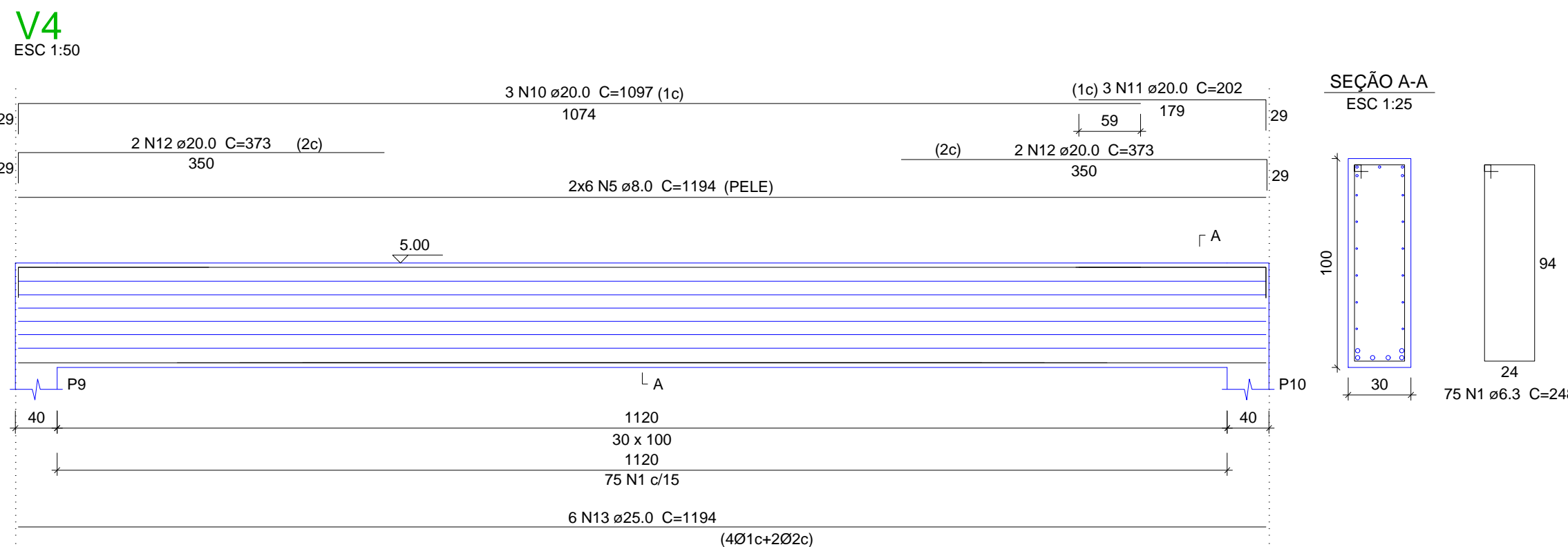
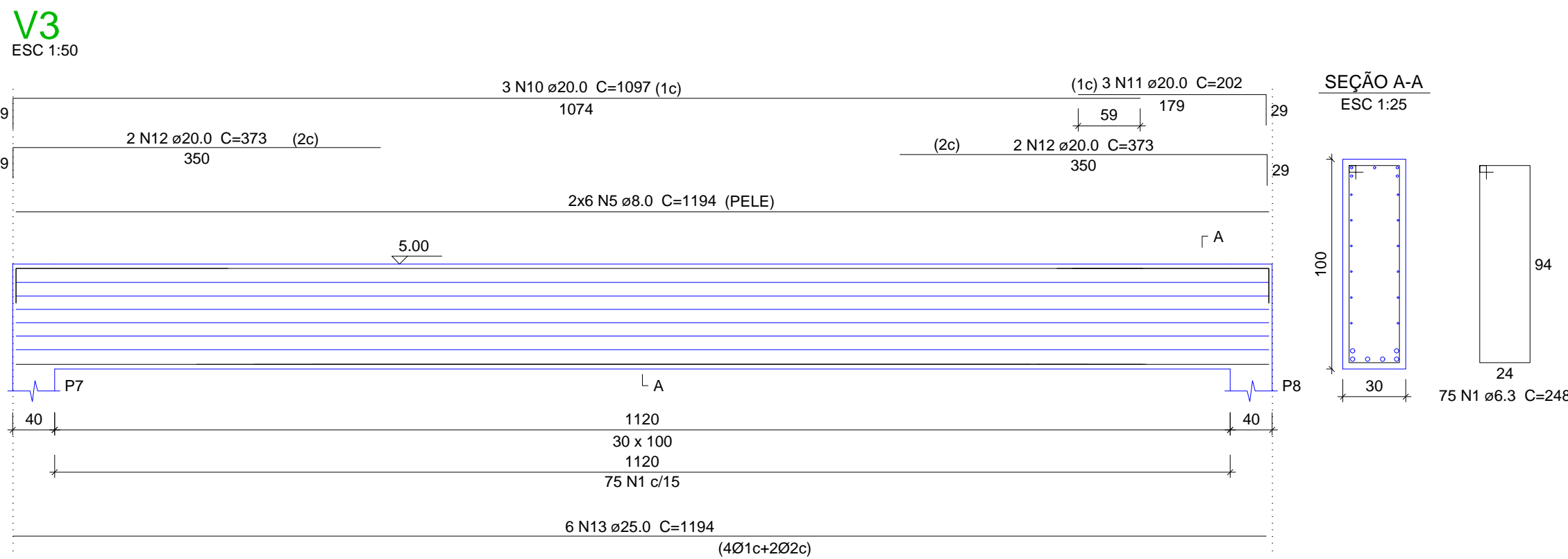
V4-1

AÇO	N	DIAM (mm)	QUANT	C.UNIT (cm)	C.TOTAL (cm)
CA50	1	6.3	300	248	74400
	2	8.0	160	394	63040
	3	8.0	166	1068	177288
	4	8.0	320	340	108800
	5	8.0	48	1194	57312
	6	20.0	12	394	4728
	7	20.0	12	450	5400
	8	20.0	24	340	8160
	9	20.0	24	416	9984
	10	20.0	12	1097	13164
	11	20.0	12	202	2424
	12	20.0	16	373	5968
	13	25.0	24	1194	28656

Resumo do aço

AÇO	DIAM (mm)	C.TOTAL (m)	PESO + 10 % (kg)
CA50	6.3	744	200.3
	8.0	4064.4	1764.1
	20.0	498.3	1351.7
	25.0	286.6	1214.6
PESO TOTAL (kg)			
CA50	4530.7		

Volume de concreto (C-40) = 47.33 m³
Área de forma = 268.34 m²



	TÍTULO: PROJETO ESTRUTURAL ARMADURA DAS VIGAS Ponte Estrada Schmidt Fundos	PRANCHA: ET-6
CLIENTE: MUNICÍPIO DE WESTFÁLIA	OBRA: Construção Ponte em Concreto Armado	LOCAL: Estrada Schmidt Fundos Westfália/RS
RESPONSÁVEL TÉCNICO: Eng. Civil Fernando Battisti CREA/RS 230.439	ÁREA TOTAL: 40,00 m²	ESCALA: 1/50 DATA: março/2025